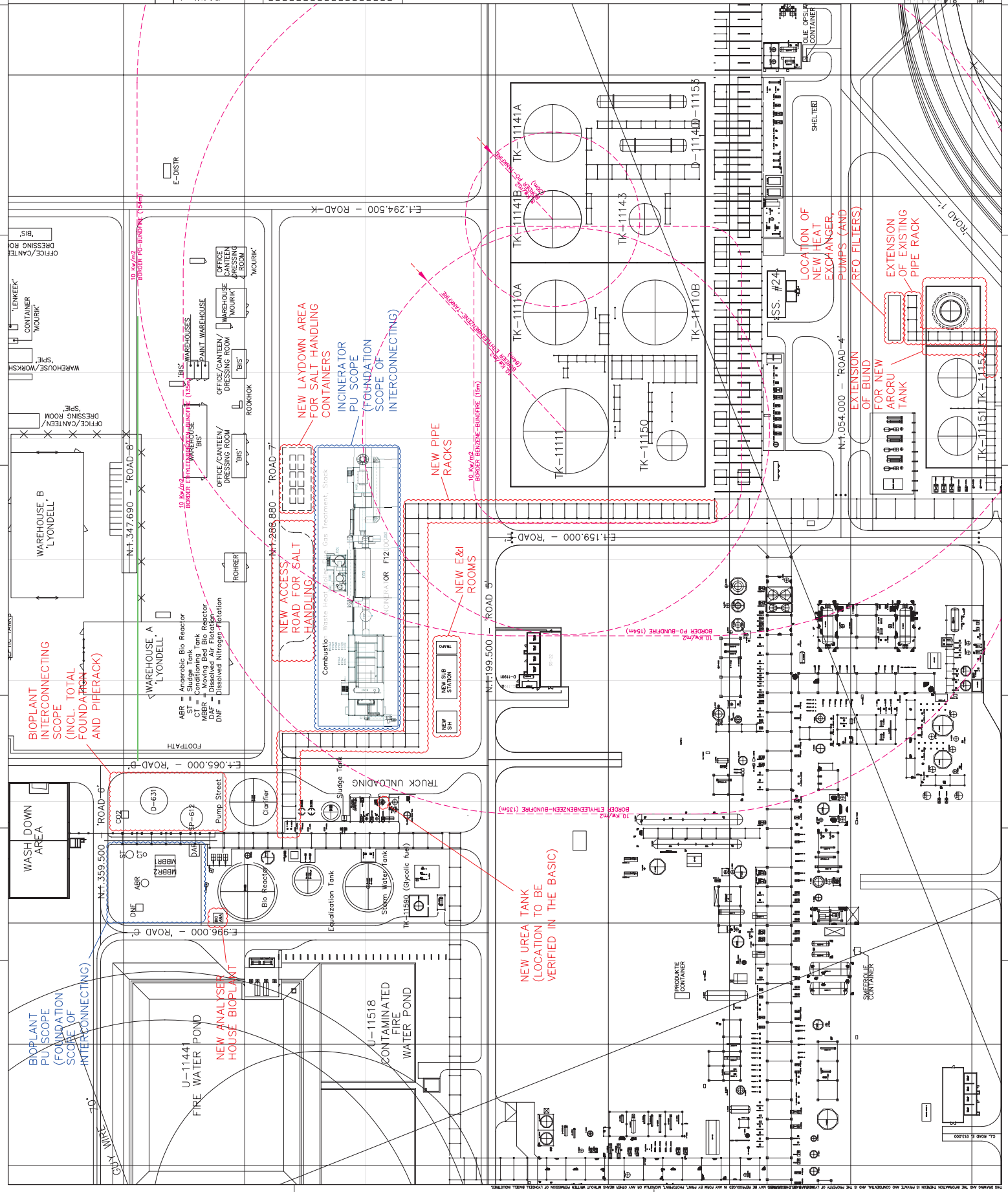


GENERAL NOTES

- PLANT BENCH MARK COORDINATE N1048.876 AND E882.879 ARE EQUAL TO NATIONAL GRID COORDINATE X:607181.01 AND Y:43749.270.
- PLANT DATUM IS 1.000 M ABOVE M.S.L.
- PLANT DATUM EL. 1000.000 EQUAL TO 4.000M N.A.P.
- COORDINATES & ELEVATIONS ARE GIVEN IN METRES.
- DIMENSIONS ARE GIVEN IN MILLIMETRES.

REFERENCE DRAWINGS

PSM-10-L-0001 BL OVERALL PLOT PLAN
 PSM-10-L-0002 KETPLAN O&L PLOT PLANS
 PSM-11-L-0006 DETAILED PLOT PLAN ADMINISTRATION AREA
 PSM-11-L-0007 DETAILED PLOT PLAN STREME TEST TANKS
 PSM-11-L-0008 DETAILED PLOT PLAN STREME PRODUCT TANKS
 PSM-11-L-0009 DETAILED PLOT PLAN STREME PRODUCT TANKS
 PSM-11-L-0010 DETAILED PLOT PLAN STREME PRODUCT TANKS
 PSM-11-L-0011 DETAILED PLOT PLAN STREME PRODUCT TANKS
 PSM-11-L-0012 DETAILED PLOT PLAN STREME PRODUCT TANKS
 PSM-11-L-0013 DETAILED PLOT PLAN STREME PRODUCT TANKS
 PSM-11-L-0014 DETAILED PLOT PLAN STREME PRODUCT TANKS
 PSM-11-L-0015 DETAILED PLOT PLAN STREME PRODUCT TANKS
 PSM-11-L-0016 DETAILED PLOT PLAN STREME PRODUCT TANKS
 PSM-11-L-0017 DETAILED PLOT PLAN STREME PRODUCT TANKS
 PSM-11-L-0018 DETAILED PLOT PLAN STREME PRODUCT TANKS
 PSM-11-L-0019 DETAILED PLOT PLAN STREME PRODUCT TANKS
 PSM-11-L-0020 DETAILED PLOT PLAN STREME PRODUCT TANKS
 PSM-11-L-0021 DETAILED PLOT PLAN STREME PRODUCT TANKS
 PSM-11-L-0022 DETAILED PLOT PLAN STREME PRODUCT TANKS
 PSM-11-L-0023 DETAILED PLOT PLAN STREME PRODUCT TANKS
 PSM-11-L-0024 DETAILED PLOT PLAN STREME PRODUCT TANKS
 PSM-11-L-0025 DETAILED PLOT PLAN STREME PRODUCT TANKS
 PSM-11-L-0026 DETAILED PLOT PLAN STREME PRODUCT TANKS
 PSM-11-L-0027 DETAILED PLOT PLAN STREME PRODUCT TANKS
 PSM-11-L-0028 DETAILED PLOT PLAN STREME PRODUCT TANKS
 PSM-11-L-0029 DETAILED PLOT PLAN STREME PRODUCT TANKS
 PSM-11-L-0030 DETAILED PLOT PLAN STREME PRODUCT TANKS
 PSM-11-L-0031 DETAILED PLOT PLAN STREME PRODUCT TANKS
 PSM-11-L-0032 DETAILED PLOT PLAN STREME PRODUCT TANKS
 PSM-11-L-0033 DETAILED PLOT PLAN STREME PRODUCT TANKS
 PSM-11-L-0034 DETAILED PLOT PLAN STREME PRODUCT TANKS
 PSM-11-L-0035 DETAILED PLOT PLAN STREME PRODUCT TANKS
 PSM-11-L-0036 DETAILED PLOT PLAN STREME PRODUCT TANKS
 PSM-11-L-0037 DETAILED PLOT PLAN STREME PRODUCT TANKS
 PSM-11-L-0038 DETAILED PLOT PLAN STREME PRODUCT TANKS
 PSM-11-L-0039 DETAILED PLOT PLAN STREME PRODUCT TANKS
 PSM-11-L-0040 DETAILED PLOT PLAN STREME PRODUCT TANKS
 PSM-11-L-0041 DETAILED PLOT PLAN STREME PRODUCT TANKS
 PSM-11-L-0042 DETAILED PLOT PLAN STREME PRODUCT TANKS
 PSM-11-L-0043 DETAILED PLOT PLAN STREME PRODUCT TANKS
 PSM-11-L-0044 DETAILED PLOT PLAN STREME PRODUCT TANKS
 PSM-11-L-0045 DETAILED PLOT PLAN STREME PRODUCT TANKS
 PSM-11-L-0046 DETAILED PLOT PLAN STREME PRODUCT TANKS
 PSM-11-L-0047 DETAILED PLOT PLAN STREME PRODUCT TANKS
 PSM-11-L-0048 DETAILED PLOT PLAN STREME PRODUCT TANKS
 PSM-11-L-0049 DETAILED PLOT PLAN STREME PRODUCT TANKS
 PSM-11-L-0050 DETAILED PLOT PLAN STREME PRODUCT TANKS



BIOPLANT INTERCONNECTING SCOPE (INCL. TOTAL FOUNDATION AND PIPERACK)

BIOPLANT PU SCOPE (FOUNDATION SCOPE OF INTERCONNECTING)

NEW ANALYSER HOUSE BIOPLANT

NEW UREA TANK (LOCATION TO BE VERIFIED IN THE BASIC)

NEW LAYDOWN AREA FOR SALT HANDLING CONTAINERS

INCINERATOR PU SCOPE (FOUNDATION SCOPE OF INTERCONNECTING)

NEW PIPE RACKS

NEW E&I ROOMS

EXTENSION OF BOUND FOR NEW ARCRU TANK

EXTENSION OF EXISTING PIPE RACK

LOCATION OF NEW HEAT EXCHANGER, PUMPS (AND RFO FILTERS)

WAREHOUSE A 'LYONDELL'

WAREHOUSE B 'LYONDELL'

ABR = Anaerobic Bio Reactor
 ST = Sludge Tank
 MBR = Moving Bed Bio Reactor
 DAF = Dissolved Air Flotation
 DNF = Dissolved Nitrogen Flotation

U-11441 FIRE WATER POND

U-11518 CONTAMINATED FIRE WATER POND



| | | | | |
|--------|------------|------|--------------|-----------|
| SCALE: | DATE: | NO.: | DESCRIPTION: | REVISION: |
| 1:1 | 10/10/2017 | 01 | ISSUE | |
| 1:1 | 10/10/2017 | 02 | ISSUE | |
| 1:1 | 10/10/2017 | 03 | ISSUE | |
| 1:1 | 10/10/2017 | 04 | ISSUE | |
| 1:1 | 10/10/2017 | 05 | ISSUE | |
| 1:1 | 10/10/2017 | 06 | ISSUE | |
| 1:1 | 10/10/2017 | 07 | ISSUE | |
| 1:1 | 10/10/2017 | 08 | ISSUE | |
| 1:1 | 10/10/2017 | 09 | ISSUE | |
| 1:1 | 10/10/2017 | 10 | ISSUE | |
| 1:1 | 10/10/2017 | 11 | ISSUE | |
| 1:1 | 10/10/2017 | 12 | ISSUE | |
| 1:1 | 10/10/2017 | 13 | ISSUE | |
| 1:1 | 10/10/2017 | 14 | ISSUE | |
| 1:1 | 10/10/2017 | 15 | ISSUE | |
| 1:1 | 10/10/2017 | 16 | ISSUE | |
| 1:1 | 10/10/2017 | 17 | ISSUE | |
| 1:1 | 10/10/2017 | 18 | ISSUE | |
| 1:1 | 10/10/2017 | 19 | ISSUE | |
| 1:1 | 10/10/2017 | 20 | ISSUE | |
| 1:1 | 10/10/2017 | 21 | ISSUE | |
| 1:1 | 10/10/2017 | 22 | ISSUE | |
| 1:1 | 10/10/2017 | 23 | ISSUE | |
| 1:1 | 10/10/2017 | 24 | ISSUE | |
| 1:1 | 10/10/2017 | 25 | ISSUE | |
| 1:1 | 10/10/2017 | 26 | ISSUE | |
| 1:1 | 10/10/2017 | 27 | ISSUE | |
| 1:1 | 10/10/2017 | 28 | ISSUE | |
| 1:1 | 10/10/2017 | 29 | ISSUE | |
| 1:1 | 10/10/2017 | 30 | ISSUE | |
| 1:1 | 10/10/2017 | 31 | ISSUE | |
| 1:1 | 10/10/2017 | 32 | ISSUE | |
| 1:1 | 10/10/2017 | 33 | ISSUE | |
| 1:1 | 10/10/2017 | 34 | ISSUE | |
| 1:1 | 10/10/2017 | 35 | ISSUE | |
| 1:1 | 10/10/2017 | 36 | ISSUE | |
| 1:1 | 10/10/2017 | 37 | ISSUE | |
| 1:1 | 10/10/2017 | 38 | ISSUE | |
| 1:1 | 10/10/2017 | 39 | ISSUE | |
| 1:1 | 10/10/2017 | 40 | ISSUE | |
| 1:1 | 10/10/2017 | 41 | ISSUE | |
| 1:1 | 10/10/2017 | 42 | ISSUE | |
| 1:1 | 10/10/2017 | 43 | ISSUE | |
| 1:1 | 10/10/2017 | 44 | ISSUE | |
| 1:1 | 10/10/2017 | 45 | ISSUE | |
| 1:1 | 10/10/2017 | 46 | ISSUE | |
| 1:1 | 10/10/2017 | 47 | ISSUE | |
| 1:1 | 10/10/2017 | 48 | ISSUE | |
| 1:1 | 10/10/2017 | 49 | ISSUE | |
| 1:1 | 10/10/2017 | 50 | ISSUE | |

LyondellBasell

CW PROJECT - PHASE 3

STUDY SITE LAYOUT

SCALE: 1:1

DATE: 10/10/2017

NO.: A0

DESCRIPTION: T500619-1361001

REVISION: 0